

LIMAX²



Magnetic Absolute Shaft Information System for Elevators

General: *LIMAX2* is an absolute measuring shaft information system that is used for positioning of elevator cars. It consists of only two components: sensor and magnetic tape.

The tape carries the unique position information as a magnetic code. It is installed free hanging in the elevator shaft by use of a mounting kit. The sensor head is mounted to the elevator car. While the actual measurement is contactless the tape must be kept within a maximum distance to the sensor head. Therefore, the tape is guided along the sensor by use of the polymer tape guide which is an integral component of the sensor head.

The magnetic measurement principle is extremely robust. Dust, dirt, and humidity do not affect the measurement in any way. Also, smoke and even higher temperatures have no influence on the measuring quality. Therefore, *LIMAX2* is also particularly suited for application in fire fighter elevators. Also is the tape robust enough to withstand the sometimes harsh conditions in elevator shafts.

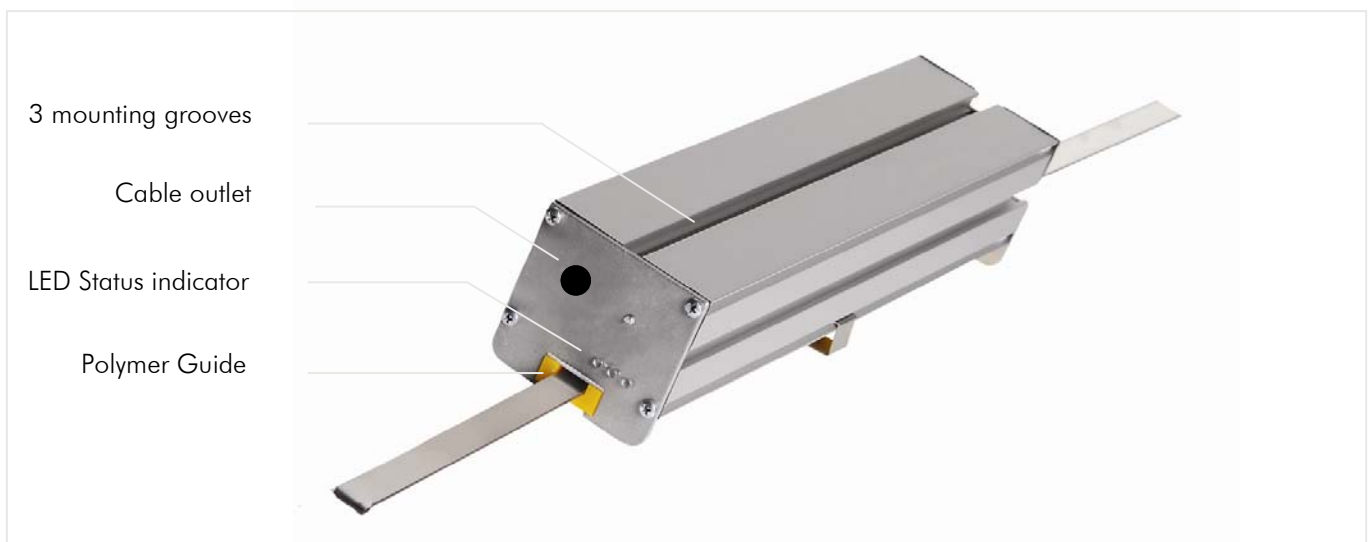
Another advantage of the system is the simple and flexible installation. Typical installation time will take about one to two hours. The system can be placed anywhere in the shaft where space conditions allow. With the small space requirement *LIMAX2* is perfect for retrofitting and modernization.

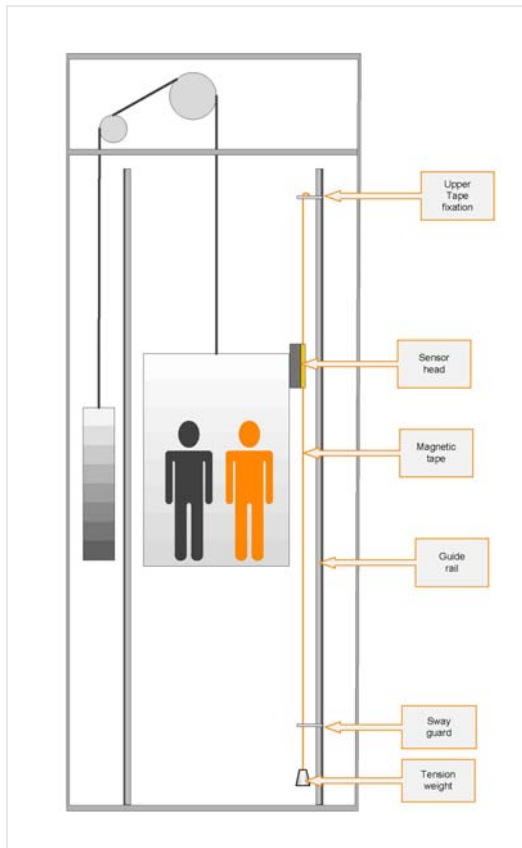
With *LIMAX2* travel heights up to 125 meters and speeds up to 6 m/s can be covered. Longer travel heights are available on request. In the standard configuration *LIMAX2* evaluates the position with a resolution of 1 mm. Resolutions down to 0.25 mm are possible.

LIMAX2 is provided with different interfaces and is tested with many established elevator controls.

Product features:

- Robust measuring principle for usage in rough environments. Insensitive to dirt, smoke, and humidity
- Simple and flexible installation
- High accuracy and repeatability
- Absolute positioning up to 125 meter and 6 m/s speed
- Resolution of 0,25mm
- Absolute position is always directly available - no referencing even after long power outages
- Compatible with most established controls with absolute encoders
- Available interfaces: SSI, CANopen (DS406,DS417), RS422, RS232





Mounting principle:

LIMAX2 can be installed at any position in the hoistway, depending on space situation and layout of the particular elevator installation.

The magnetic tape is installed vertically in the hoistway. Preferred fixation is on the guide rail by use of an appropriate mounting kit. Alternatively, the tape can be fixed to any structure in the shaft head or directly bolted into the ceiling. The necessary tension in the tape is provided by a tension weight of about 5kg. A sway guard at the bottom is recommended. This will keep the tape from swaying in an uncontrolled manner which may cause damage to the tape or other components in the shaft.

The sensor head can be mounted onto the car body or car frame – again depending on the specific conditions of the elevator.

Detailed installation instructions are available. Please contact us for support and further details.

Accessories:

AB20-80-10-1-R-D-15 Magnetic tape

MKB Mounting kit „MKB“ - Installation on guide rail



MKF Mounting kit „MKF“ - Installation ceiling / floor

